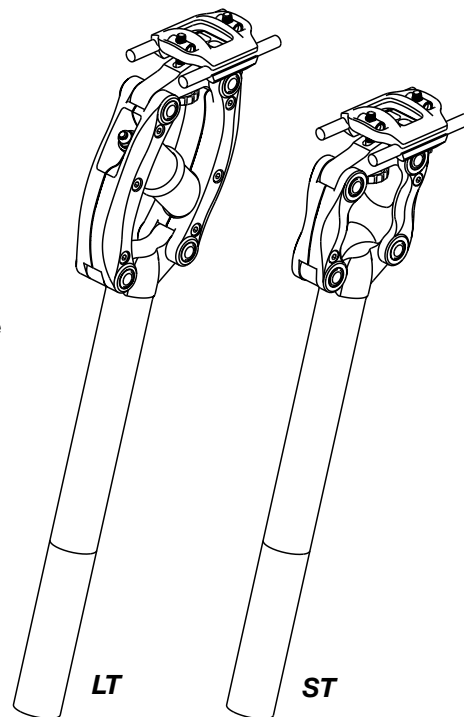


INITIAL INSTALLATION

1. Note your current saddle height and fore/aft position to duplicate it with the Thudbuster.
2. Remove your current saddle and seatpost.
3. Confirm your new Thudbuster seatpost (or shim) diameter is the same as your old seatpost. (Thudbusters are available in six direct fit sizes between 25.4 and 31.6 mm.)
4. Grease the shim (if applicable) and seat pillar before installing. **DO NOT** lubricate seat tubes of Carbon frames (unless specified by the manufacturer).
5. Insert the shim (if applicable) into the bicycle frame with the split facing rearward.
6. Install the Thudbuster into the bicycle frame to approximately the correct height with the extension marks on seat pillar facing the front of the bicycle.
7. Loosen the two saddle clamp bolts (front and rear) until the threads are barely engaging the barrel nuts (1 or 2 threads). Be sure grease is applied to the interface between the lower clamp and cradle.
8. Place one rail of saddle in position between the upper and lower clamps. Then rotate saddle so the other rail slips over the far edge of the upper clamp and into position in the rail grooves of the lower clamp.
9. Begin to tighten the front and rear clamp bolts. The saddle tilt adjustment is controlled by these two bolts. Check that the saddle tilt and fore/aft position of the saddle are correct before final tightening. The front bolt can be adjusted by hand or hex wrench, but the rear bolt must be tightened to 60 in*lb (6.8 N*m) with a 4 mm hex wrench. Be sure all the components of the clamp are installed as shown in section view. (Figure 1)
10. Adjust the saddle height if necessary.



NOTICE! The Thudbuster must be set-up with appropriate elastomers before riding (See below). **Maximum allowable rider weight is 250 lb (115kg).**

SET-UP

THUSBUSTER seatposts can be tuned for different weight riders and riding styles by combining the proper elastomers (spring rate) with the proper amount of preload (travel initiation load).

SELECTING ELASTOMERS

Start with the softest elastomer recommended for a given rider weight. The Thudbuster LT is shipped with 2 each of grey, blue and black elastomers. The Thudbuster ST includes 1 each of grey, blue, and black elastomers. You may desire to increase the stiffness by using harder elastomers.

NOTICE! Never use softer elastomers than those recommended for your weight.

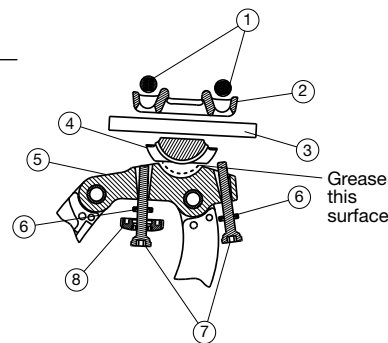


Figure 1

Thudbuster LT

Rider Weight		Recommended Elastomer
(pounds)	(kg)	
90 - 110	41 - 50	White* - White*
108 - 128	49 - 58	White* - Gray
125 - 145	57 - 66	Gray - Gray
143 - 163	65 - 74	Gray - Blue
160 - 180	73 - 82	Blue - Blue
178 - 198	81 - 90	Blue - Black
195 - 215	88 - 98	Black - Black
213 - 233	96 - 105	Black - Purple*
230 - 250	104 - 113	Purple* - Purple*

Thudbuster ST

Rider Weight		Recommended Elastomer
(pounds)	(kg)	
90 - 130	41 - 59	White*
120 - 160	54 - 73	Gray
150 - 190	68 - 86	Blue
180 - 220	82 - 100	Black
210 - 250	95 - 113	Purple*

* White and purple elastomers are available for purchase at www.canecreek.com/store

- ① Barrel nut (2)
- ② Upper clamp
- ③ Saddle rails
- ④ Lower clamp
- ⑤ Cradle
- ⑥ Spherical washer (2)
- ⑦ Clamp bolt (2)
- ⑧ Adjustment knob

CHANGING ELASTOMERS – Thudbuster LT

- Using an 8 mm socket wrench and a 4 mm hex wrench, loosen the locknut completely.
- Push the saddle forward slightly to remove upper white, nylon washer and steel washer.
- Remove the skewer bolt, keeping the lower nylon washer and steel washer on the skewer.
- Push the saddle farther forward to remove the elastomers and coupling washer.
- Select elastomers as required. When mixing different spring rate elastomers, the order does not matter.
- Grease the skewer bolt shaft and the top and bottom of each elastomer.
- Place the coupling washer between the elastomers and place them into the assembly.
- Insert the skewer bolt through the lowest elastomer and the coupling washer.
- Push the saddle rearward while pushing the skewer through the top elastomer and hole.
- Re-install the nylon washer, steel washer and the locknut. **DO NOT TIGHTEN.**
- Install the locknut so that one full thread is exposed beyond the locknut (figure 2).

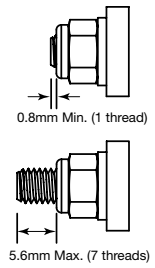


Figure 2

CHANGING ELASTOMER – Thudbuster ST

- Using a 3 mm hex wrench, loosen the two screws on the front arm assembly—one on each side.
- Slide one half of the front arm off the pivots (figure 4). Wiggling the saddle fore and aft while pulling on the arm half will make it easier to remove.
- Push the elastomer out of the linkage pockets.
- Insert the new elastomer in the linkage pockets. Be sure to orient the elastomer properly. The concave cuts should be on the top and bottom enabling clearance for the front clamp bolt on the underside of the cradle. (figure 5)
- Check that the brass washers are still in place on the pivot pins.
- Reassemble the front arm half on the pivot pins being careful not to pinch the elastomer.
- Reassemble the two screws and tighten to 30 in*lb (3.4N*m).

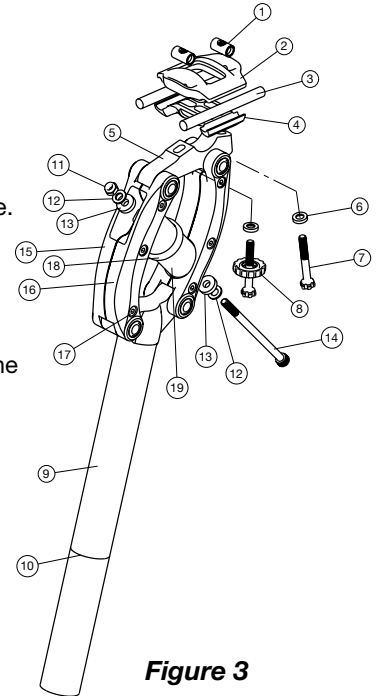


Figure 3

MAINTENANCE

- The pivot washers should occasionally be lubricated with a light oil.
- The skewer and elastomers must be lubricated periodically with grease. Apply grease to the shaft of the skewer and to the ends of the elastomers. The elastomers must be removed and reassembled as explained in the changing elastomers section of the instructions.

NOTICE! If you ride in muddy conditions, using either a fender or the Cane Creek Crudbuster neoprene boot will protect the pivots and extend the life of your seatpost.

NOTICE! Thudbuster seatposts are designed to absorb small bumps only. You should still stand up when encountering large obstacles on the road or trail.

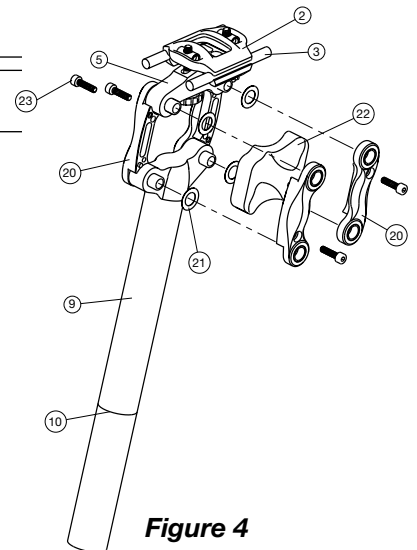


Figure 4

- | | | |
|------------------------|----------------------------------|----------------------|
| ① Barrel nut (2) | ⑨ Seat pillar | ⑰ Arm bolt, 20mm (6) |
| ② Upper clamp | ⑩ Minimum insertion line (100mm) | ⑱ Coupling washer |
| ③ Saddle rails | ⑪ Lock nut | ⑲ Elastomer - LT (2) |
| ④ Lower clamp | ⑫ Steel washer (2) | ⑳ Arm - ST (4) |
| ⑤ Cradle | ⑬ Nylon washer (2) | ㉑ Pivot washer (8) |
| ⑥ Spherical washer (2) | ⑭ Skewer bolt | ㉒ Elastomer - ST |
| ⑦ Clamp bolt (2) | ⑮ Arm - LT, right (2) | ㉓ Arm bolt, 16mm (4) |
| ⑧ Adjustment knob | ⑯ Arm - LT, left (2) | |

WARRANTY

THUDBUSTER seatposts are warranted against defects in materials or workmanship for one year from the date of purchase. This warranty applies to the original owner only. At their discretion, Cane Creek Cycling Components will repair or replace any defective seatpost with the same or comparable model. This warranty is void if the seatpost is damaged as a result of abuse, alterations, modifications, improper adjustment, lack of maintenance, crashes, or other conditions judged by Cane Creek Components to be abnormal, excessive, or improper. It is mandatory that a Return Authorization Number (RA#) is received (by calling Cane Creek) before any return is made. Additionally, a dated Proof of Purchase must accompany the seatpost when returned.

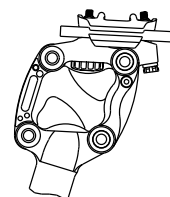


Figure 5