



# THUDBUSTER Suspension Seatpost Instructions

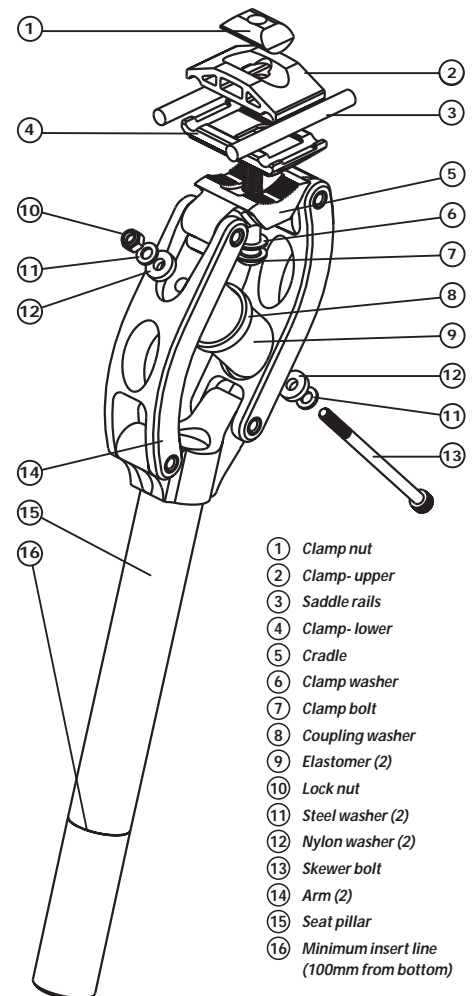
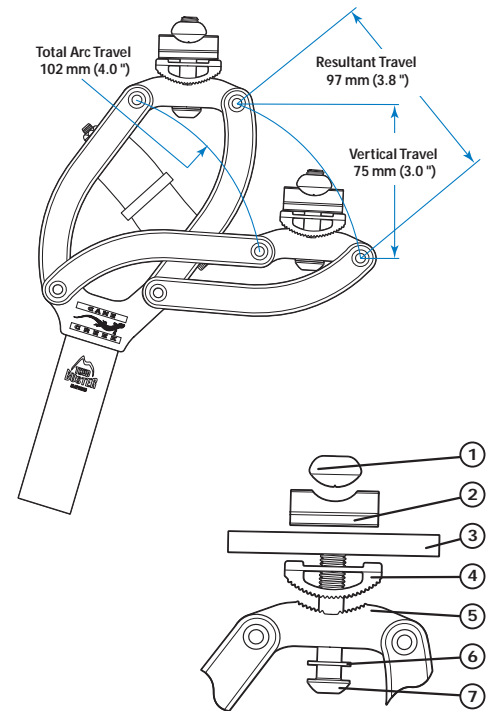
## HOW THE THUDBUSTER SEATPOST WORKS

The Thudbuster seatpost is a four-bar linkage suspension. The cradle, to which the saddle is fixed, travels in a rearward arcing motion while maintaining the saddle's proper orientation. This system eliminates the stiction normally experienced with telescoping seatposts. The telescoping seatposts move the saddle down and forward rather than the more natural down and rearward motion afforded by the Thudbuster.

The heart of the Thudbuster's design is a stack of two elastomers that provide both the spring and damper components. While the damping is not independently adjustable, the elastomer set provided with the Thudbuster enable five different spring rate settings to finely tune the post to your weight and riding style.

## INSTALLATION

1. Note your current saddle height and fore/aft position to duplicate it with the THUDBUSTER.
2. Remove your current saddle and seatpost.
3. Confirm your new THUDBUSTER seatpost (or shim) diameter is the same as your old seatpost. (THUDBUSTERS are available in (11) direct fit sizes between 25.4 and 31.8 mm.)
4. Grease the shim (if applicable) and seat pillar before installing. DO NOT lubricate seat tubes of Carbon frames (unless specified by the manufacturer).
5. Insert the shim (if applicable) into the bicycle frame with the split facing rearward.
6. Install the THUDBUSTER into the bicycle frame to approximately the correct height with the Thudbuster logo on seat pillar facing the front of the bicycle.
7. Attach the saddle with the enclosed clamp kit as shown in the illustration (middle right) and position to the desired angle and fore/aft position.
8. Tighten the clamp bolt to 10-11 N\*m (90-100 in\*lb) with the provided 5 mm hex wrench, ensuring the washer is under the bolt head.
9. Adjust the saddle height if necessary.



- ① Clamp nut
- ② Clamp- upper
- ③ Saddle rails
- ④ Clamp- lower
- ⑤ Cradle
- ⑥ Clamp washer
- ⑦ Clamp bolt
- ⑧ Coupling washer
- ⑨ Elastomer (2)
- ⑩ Lock nut
- ⑪ Steel washer (2)
- ⑫ Nylon washer (2)
- ⑬ Skewer bolt
- ⑭ Arm (2)
- ⑮ Seat pillar
- ⑯ Minimum insert line (100mm from bottom)

**Notice!** The Thudbuster must be set-up with appropriate elastomers before riding.

## SET UP

THUDBUSTER seatposts can be tuned for different weight riders and riding styles by combining the proper elastomers (spring rate) with the proper amount of preload (travel initiation load).

Rider Weight		Minimum Elastomer Recommendation
lb	kg	
Under 100	Under 45	White/White
100-120	45-54	White/Grey
120-140	54-64	Grey/Grey
140-165	64-75	Grey/Blue
165-190	75-86	Blue/Blue
190-215	86-98	Blue/Black
215-250	98-113	Black/Black

## SELECTING ELASTOMERS

Start with the minimum elastomer guideline (left) for average recommendations. THUDBUSTERS are shipped with 2 each of grey, blue and black elastomers. You may desire to increase the stiffness by using harder elastomers. Never use softer elastomers than those recommended for your weight. *White elastomers are available*

for purchase at [www.canecreek.com/store](http://www.canecreek.com/store).

**Notice!** The saddle and seatpost must be securely installed on the bicycle to remove the elastomers or make any adjustments

**WARNING!** Maximum Allowable Rider Weight = 250 lb (113 kg)

4. Push the saddle farther forward to remove the elastomers and coupling washer.
5. Select elastomers as required. When mixing colors, the order does not matter.
6. Grease the skewer bolt shaft and the top and bottom of each elastomer.
7. Place the coupling washer between the elastomers and place them into the assembly.
8. Insert the skewer bolt through the lower elastomer and the coupling washer.
9. Push the saddle rearward while pushing the skewer through the top elastomer and hole.
10. Reinstall the nylon washers, steel washers and the locknut. **DO NOT TIGHTEN.**
11. Install the locknut so that one full thread is exposed beyond the locknut. Additional tightening will add preload to the assembly.

**Notice!** DO NOT exceed 100 pounds (45 kg) preload or 7 threads exposed!

additional preload to the assembly. While there must be at least one thread showing beyond the locknut, additional turns of the nut can add preload. Additional preload will increase the force required to initiate travel and will minimize the suspension travel for small bumps. Refer to the table (left) and illustration (right) to set up preload. The values in the table are the thread length beyond the end of the locknut to achieve the preloads in the column heading for a given elastomer spring combination.

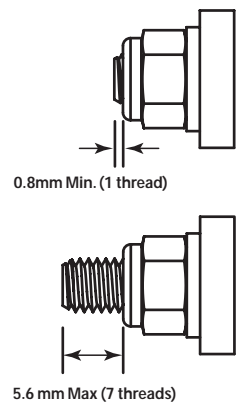
	<b>Additional Preload</b>				<b>lb (kg)</b>
	<b>25 (11)</b>	<b>50 (23)</b>	<b>75 (34)</b>	<b>100 (45)</b>	
Grey/Grey	(1.6 mm)	(3.5 mm)	(5.7 mm)	-----	
Blue/Blue	(1.0 mm)	(2.1 mm)	(3.3 mm)	(4.7 mm)	
Black/Black	(0.8 mm)	(1.7 mm)	(2.7 mm)	(3.8 mm)	

**CHANGING ELASTOMERS**

1. Using an 8 mm wrench and a 4 mm hex wrench, loosen the locknut.
2. Push the saddle forward slightly to remove upper nylon and steel washers.
3. Remove the skewer bolt, keeping the lower nylon washer and steel washer on the skewer.

**PRELOAD ADJUSTMENT**

The Skewer and locknut can be used to add



**Notice!** If you ride in muddy conditions, using either a fender or the Cane Creek Crudbuster neoprene boot will protect the pivots and extend the life of your seatpost.

**MAINTENANCE**

1. The pivot washers should occasionally be lubricated with a light oil.
2. The skewer and elastomers must be lubricated periodically with grease. Apply grease to the shaft of the skewer and to the ends of the elastomers. The elastomers must be removed and reassembled as explained in the **Changing Elastomers** section of the instructions.

**Notice!** Thudbuster seatposts are designed to absorb small bumps only. You should still stand up when encountering large obstacles on the road or trail.

**WARRANTY**

Cane Creek Cycling Components warrants its bicycle components for a period of two years from the original date of purchase. Any Component that is found to be defective in

materials or workmanship will be repaired or replaced at the discretion of Cane Creek. This warranty applies to the original owner only. This warranty does not cover damage or failure resulting from misuse, abuse, alteration, neglect, wear and tear, crash or impact, lack of maintenance or other conditions judged by Cane Creek to be abnormal, excessive, or improper. It is mandatory that a Return Authorization Number (RA#) is obtained by calling Cane Creek before any product is returned. Additionally, a dated Proof of Purchase must accompany the product when returned. (Revised 3.18.2002)

